

## Feltonville Arts and Sciences Middle School – Philadelphia, PA

**Enrollment:** 2008-09  
**Grades:** 6-8

**Number of students:** 712  
29.5% African American  
56.7% Hispanic  
7.7% Asian  
3.8% White

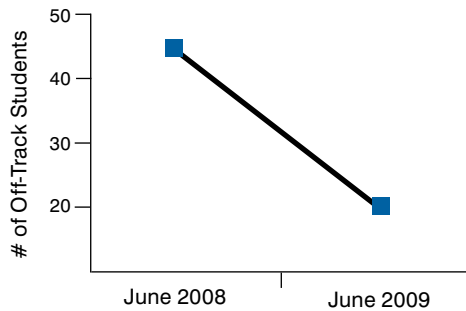
**Free and Reduced-Price Lunch:** 84.9%  
**Special Ed:** 13.4% (2007-08 statistics)  
**English Language Learners:** 10.3% (2007-08)

### Diplomas Now Results:

## Feltonville made Adequate Yearly Progress (AYP)

#### Attendance

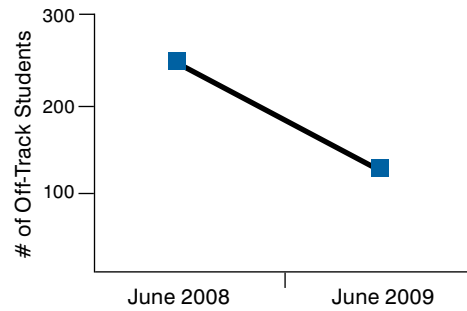
# of Students with lower than 80% Attendance



Students off track in attendance:  
**reduced by 52%**

#### Behavior

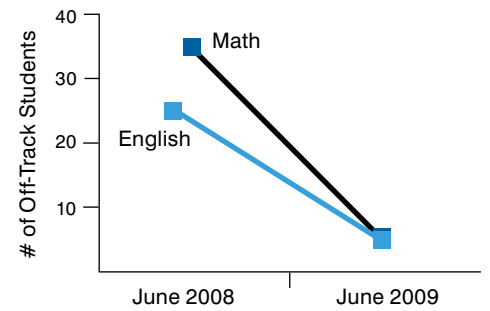
# of Students with 3 or more negative behavior marks



Students off track in behavior:  
**reduced by 45%**

#### Course Performance

# of Students receiving an F in Math or English



Students off track because of failing mathematics grade:  
**reduced by 83%**

Students off track because of failing English grade:  
**reduced by 80%**

#### Suspensions

**85% reduction** in suspensions in the first two marking periods of 2008-09 compared to the previous school year

**82% reduction** in the number of suspension days during the same period

FOUNDING INVESTOR



National Technical Assistance Partner